



Applicable Requirements :
ANSI/UL 1017
CSA C22.2 No.243

Characteristics



HEPA -
Included



High Filtration
Efficiency Unit



Dry Recovery



Coalescing
Filter Element



SS 304



Wet Mix - Water



Less than 10
ohms



- Meets the requirements for a Liquid Precipitation Collector for metal dusts as outlined in NFPA 484
- Intermittent sanding and corrosion control
- Coalescing Filter Element (CFE) for moisture removal. HEPA Grade. 99.97% efficiency at 0.3 micron
- Fully automatic remote start/stop system allows the vacuum system to be controlled by pneumatic hand tools - optional
- Recovery capacity of 11 lb (5 kg) of dust into 6.5 gal. (25L) of water (no oil)

Specifications

2D-15 (IT-63L) SK (CFE) HEPA - ORD LOCATIONS	113188A
Model Name	2D-15 (IT-63L) SK (CFE) HEPA
Type (Powerhead)	Electric
Tension	120 V
Frequency	60 Hz
Phase	Single
Wattage	1207 W
Power	1.6 HP
Amperage	10.5 A
Air Flow	110 CFM
Vacuum Pressure	107 " H ₂ O
Sound Level	75 dB(A)
Type of Power Outlet	120V
Suction Inlet Port	2 "
Cart Type	Detachable Tank (DT)
Filter Cleaning	Liquid Immersion Bath
Length	31 "
Width	24 "
Height	63 "
Weight (Vacuum Only)	180 lb.
Cord Length	35 ft.

Please note that specifications are subject to change without notice

Use only recommended tools & accessories



2D-15 (IT-63L) with Recovery Tank removed



2D-15 (IT-63L) Rack for Sanders and Side Hooks for Hoses - Included



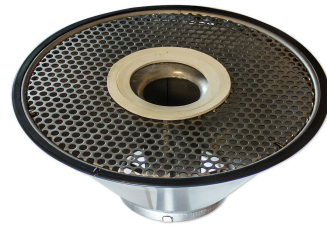
2D-15 (IT-63L) Automatic Remote Start/Stop - Optional



Coalescing HEPA filter (Upstream) - Included



Liquid Level Indicator Tube - Included



Cone for Interceptors - Included



Mist Arrestor Pack - Optional



Sieve Basket - Optional



Degassing Vent - Included