



Applicable Requirements :  
ANSI/UL 1017  
CSA C22.2 No.243



Forklift  
Ready



Wet and Dry  
Recovery

### Characteristics



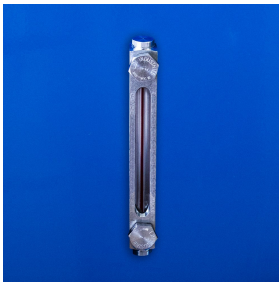
- Electric industrial vacuum system with Self-Dumping Overturning Hopper for the recovery of large quantities of metal chips mixed with some oil/coolant
- Powerhead with dual bypass/dual speed long life motors is mounted directly on the hopper
- The internal volume of the hopper is 52 gal. (200L). A screen inside the hopper separates the upper part from the lower part. It can recover 26 gal. (100L) of metal chips and 26 gal. (100L) of oil/coolant
- The metal chips are separated from the oil inside the hopper. The metal chips are recovered in the upper part of the hopper and the oil is deposited at the bottom of the hopper. The screen can be removed and 52 gal. (200L) of chips can be recovered
- The oil is emptied using the 1" drain valve
- The Recovered metal chips are easily emptied using a forklift to lift and dump the contents of the hopper. There is no manual lifting required. The manually operated dumping mechanism is easy to use
- Four 5" (125 mm) wheels, allow for maximum maneuverability
- A washable main cloth filter is installed upstream from the motors

## Specifications

4D-300 (SDOH) SERIES	112630A	112632A
<b>Model Name</b>	4D-300 (SDOH)	4D-300 (SDOH)
<b>Type (Powerhead)</b>	Electric	Electric
<b>Tension</b>	120 V	120 V
<b>Frequency</b>	60 Hz	60 Hz
<b>Phase</b>	Single	Single
<b>Wattage</b>	2040 W	2400 W
<b>Power</b>	2.7 HP	3.2 HP
<b>Amperage</b>	15.2 A	21 A
<b>Air Flow</b>	200 CFM	220 CFM
<b>Vacuum Pressure</b>	90 " H <sub>2</sub> O	107 " H <sub>2</sub> O
<b>Type of Power Outlet</b>	Not Included	Not Included
<b>Suction Inlet Port</b>	90 mm	90 mm
<b>Cart Type</b>	Carriage Base (CB)	Carriage Base (CB)
<b>Recovery Capacity (Tank)</b>	52 gal.	52 gal.
<b>Length</b>	43 "	43 "
<b>Width</b>	37 "	37 "
<b>Height</b>	57 "	57 "
<b>Weight (Vacuum Only)</b>	365 lb.	365 lb.
<b>Cord Length</b>	33 ft.	33 ft.

Please note that specifications are subject to change without notice

### Use only recommended tools & accessories



Liquid Level Indicator - Included



Ø1" (Ø25.4 mm) Manual Drain Valve - Included



Self-Dumping Overturning Hopper (SDOH) - Included



4D-300L (SDOH) Cut-Out