



Applicable Requirements :  
ANSI/UL 1017  
CSA C22.2 No.243



Forklift  
Ready



Wet and Dry  
Recovery



### Characteristics

- Electric industrial vacuum system for the recovery of large quantities of coolant/oil mixed with some metal chips
- The powerhead with dual bypass/dual speed long life motors is mounted directly on the recovery tank
- The internal volume of the recovery tank is 55 gal. (200L). There is a basket in the upper part of the recovery tank which collects the metal chips
- The basket can hold 10 gal. (30L) of metal chips, which allows 45 gal. (170L) of coolant/oil to be recovered in the lower part of the recovery tank
- Coolant/oil is emptied using the manual drain valve
- An electric discharge pump is available for emptying the recovered coolant/oil. The flow rate of the optional pump is 80 gallons per minute (300L/min)
- Four 5" (125 mm) wheels, allow for maximum maneuverability
- A floater (liquid cut-off) is installed under the powerhead to prevent overfilling
- a 100 PPL Protection Filter is also included. The protection filter prevents smaller particles from getting into the pump

## Specifications

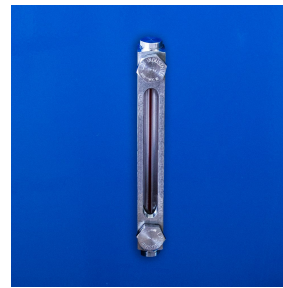
4D-300 (COOLANT/OIL) SERIES	112636A	112638A
<b>Model Name</b>	4D-300 (COOLANT/OIL)	4D-300 (COOLANT/OIL)
<b>Type (Powerhead)</b>	Electric	Electric
<b>Tension</b>	120 V	120 V
<b>Frequency</b>	60 Hz	60 Hz
<b>Phase</b>	Single	Single
<b>Wattage</b>	2040 W	2400 W
<b>Power</b>	2.7 HP	3.2 HP
<b>Amperage</b>	15.2 A	21 A
<b>Air Flow</b>	200 CFM	220 CFM
<b>Vacuum Pressure</b>	90 " H <sub>2</sub> O	107 " H <sub>2</sub> O
<b>Type of Power Outlet</b>	Not Included	Not Included
<b>Suction Inlet Port</b>	80 mm	80 mm
<b>Cart Type</b>	Carriage Base (CB)	Carriage Base (CB)
<b>Liquid Recovery Capacity</b>	45 gal.	45 gal.
<b>Solid Recovery Capacity</b>	10 gal.	10 gal.
<b>Length</b>	47 "	47 "
<b>Width</b>	24 "	24 "
<b>Height</b>	51 "	51 "
<b>Weight (Vacuum Only)</b>	415 lb.	415 lb.
<b>Cord Length</b>	33 ft.	33 ft.

Please note that specifications are subject to change without notice

## Use only recommended tools & accessories



Sieve Basket and 100 PPL Protection Filter - Included



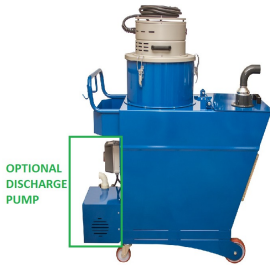
Liquid Level Indicator - Included



Ø2.5" (Ø64 mm) Manual Drain Valve - Included



Discharge Pump - Electrically Operated - Optional



4D-300L (COOLANT/OIL) Side View