



EXP1 Models Certified for:

CLEANING MACHINES For Hazardous Locations (Classes C1618 01 & C1618 81)
Class I, Division 1, Division 2, Group D, T3C and Class II, Division 1, Division 2, Groups E, F and G



GUARANTEED for the Safe Recovery of Combustible/Conductive Dusts

ESD Safe Vacuum Systems for Hazardous Locations are designed to prevent ignition hazards.
We use metal parts or Static Dissipative Powder Coating to prevent Electrostatic Discharge (ESD)

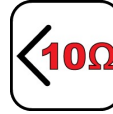


Complies with NFPA 77 "Recommended Practice on Static Electricity"

Characteristics



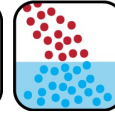
EX Certified



Less than 10 ohms



Dry Recovery



Wet Mix - Water



HEPA - Included



High Filtration Efficiency Unit



SS 304



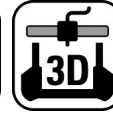
Detachable Tank



Coalescing Filter Element



SD Accessories - Included



3D Printing



- Immersion separator "Wet (Water) Mix" - Only meant to be used with water (no oil)
- **Designed for the Recovery and INERTIZATION of Conductive and Explosive Dust, such as Aluminum, Magnesium, Zirconium and other commercial alloys, into a Liquid Immersion Bath**
- Legally certified explosion proof/dust ignition proof
- Meets the requirements for a Liquid Precipitation Collector for metal dusts as outlined in NFPA 484
- Less than 10 ohms of resistivity
- Coalescing Filter Element (CFE) for moisture removal
- HEPA filter with an efficiency of 99.995% at 0.3 micron. Tested IEST-RP-CC001. H14 by MPPS method as per EN 1822 and OSHA compliant. All of our HEPA vacuum systems are aerosol leak tested before leaving our facility - included
- Electric
- Stainless steel Type 304 interceptor tank
- Recovery capacity of 11 lb (5 kg) of dust into 6.5 gal. (25L) of water (no oil)
- Degassing vent allows gas to be evacuated automatically from the unit
- Portable and equipped with a single, or dual, static dissipative suction hose connector
- Detachable recovery tank (DT) for easy disposal of recovered materials
- Equipped with a liquid level indicator
- OSHA Combustible Dust National Emphasis Program "NEP" NRTL approved. NRTL certified US/Canada for use in hazardous locations as defined in NFPA 70. Meets NFPA 484 Guidelines
- At Tiger-Vac® safety has no compromise

Specifications

EXP1-IT (63L) EX (CFE) HEPA W/3D TOOL KIT	113168A-3D
Model Name	EXP1-IT (63L) EX (CFE) HEPA W/3D TOOL KIT
Type (Powerhead)	Electric
TEFC Motor	Yes
Tension	120 V
Frequency	60 Hz
Phase	Single
Wattage	1000 W
Power	1.3 HP
Amperage	9 A
Air Flow	132 CFM
Vacuum Pressure	69 " H ₂ O
Sound Level	78/85 dB(A)
Type of Power Outlet	Not Included
Suction Inlet Port	2 "
Cart Type	Detachable Tank (DT)
Filter Cleaning	None
Length	31 "
Width	24 "
Height	63 "
Weight (Vacuum Only)	168 lb.
Cord Length	50 ft.

Please note that specifications are subject to change without notice

Use only recommended tools & accessories



3D Tool Kit for 2" camlock suction inlet - included



Optional 3D Tools



Coalescing HEPA filter (Upstream) - Included



Mist Arrester Pack - Included



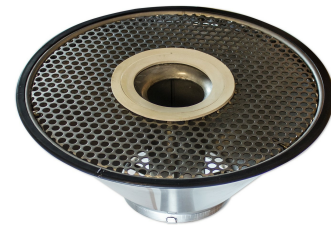
EXP1-IT (63L) with optional Dust Extraction Arm



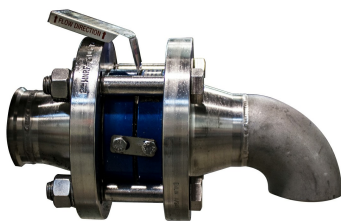
Liquid Level Indicator Tube - Included



Sieve Basket - Included



Cone for Interceptors - Included



Rupture Disk - Optional



EXP1-IT (63L) with Recovery Tank removed