



Applicable Requirements :
ANSI/UL 1017
CSA C22.2 No.243

Characteristics



Pharma Applications



Cleanroom Compatible



Wet and Dry Recovery



ULPA - Included



High Filtration Efficiency Unit



Static Dissipating



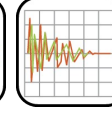
SS 304 and 316



Accessories Included



Less than 10 ohms



EMI Shielded



- ULPA filter with an efficiency of 99.999% at 0.12 micron. Filtration efficiency of 99.9995% at 0.18 micron. Tested IEST-RP-CC001. U15 by MPPS method as per EN 1822. All of our ULPA vacuum systems are aerosol leak tested before leaving our facility - included
- Cleanroom compatible with ISO Class 4 (former Class 10). Can be used in the Pharmaceutical industry
- Static free and ESD safe
- EMI/RFI Shielded
- Autoclavable sieve basket with stainless steel mesh filter
- Designed for the recovery of broken ampules and glass
- Heavy duty 2-stage by-pass motor
- For wet & dry recovery
- Electropolished stainless steel recovery tank
- Liquid recovery capacity of 7.5 gal. (53L) of coolant in the recovery tank and 4 gal. (47L) of chips in the sieve basket
- Mounted on a 4-wheel dolly for easy maneuverability
- Includes a complete tool kit.

Specifications

CWR-10 (PHARMA)	110535A
Model Name	CWR-10 (PHARMA)
Type (Powerhead)	Electric
Tension	120 V
Frequency	60 Hz
Phase	Single
Wattage	1200 W
Power	1.6 HP
Amperage	10.5 A
Air Flow	110 CFM
Vacuum Pressure	107 " H ₂ O
Sound Level	75 dB(A)
Type of Power Outlet	120V
Suction Inlet Port	2 "
Cart Type	4 Wheel Dolly (4W)
Filter Cleaning	None
Dust Recovery Tank	4 Gal
Liquid Recovery Capacity	7.5 gal.
Width	17 "
Height	39 "
Weight (Vacuum Only)	77 lb.
Cord Length	35 ft.

Please note that specifications are subject to change without notice

Use only recommended tools & accessories



CWR-10 (PHARMA) Sieve Basket - Included



Stainless Steel Mesh Filter - Included



ULPA Filter - Included



CWR-10 (PHARMA) Tools and Accessories - Included



Needle Trap - Optional