

CLEANING MACHINES FOR UNCLASSIFIED (GENERAL PURPOSE) AREAS

All the electrical components are certified by an NRTL such as UL, CSA or ETL



Complies with NFPA 77 "Recommended Practice on Static Electricity"



### Characteristics



Continuous  
Duty



HEPA -  
Included



High Filtration  
Efficiency Unit



Dry Recovery



Detachable  
Tank



SD Accessories  
- Included

- Complies with NFPA 652 paragraph 8.4.2.2.1.7 and NFPA 654 paragraph 8.4.3.7 (1) to (7)
- Industrial continuous duty vacuum system
- Very powerful machine capable of working with large diameter suction hoses up to 70 mm. Perfect for Food industry, machine shops, Plastics industry, Ceramics industry, printing, textiles, heavy clean-up, etc.
- Regenerative blower with TEFC induction motor rated for continuous duty
- Includes a star shaped main filter
- Manual Filter Shaker (MFS) system
- HEPA filter with an efficiency of 99.995% at 0.3 micron. Tested IEST-RP-CC001. H14 by MPPS method as per EN 1822 and OSHA compliant. All of our HEPA vacuum systems are aerosol leak tested before leaving our facility - included
- Detachable recovery tank (DT) for easy disposal of recovered materials
- Sight glass installed on recovery tank
- Exhaust silencer for a quiet operation
- Includes a complete static dissipative tool kit

## Specifications

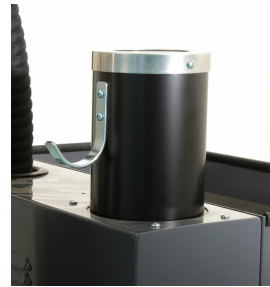
TV-775 (DT) MFS HEPA ORDLOC-652	112080A1-652	112080A5-652	112082A1-652	112082A5-652
<b>Model Name</b>	TV-775 (DT) MFS HEPA ORDLOC-652	TV-775 (DT) MFS HEPA ORDLOC-652	TV-775 (DT) MFS HEPA ORDLOC-652	TV-775 (DT) MFS HEPA ORDLOC-652
<b>Type (Powerhead)</b>	Electric	Electric	Electric	Electric
<b>TEFC Motor</b>	Yes	Yes	Yes	Yes
<b>Tension</b>	460 V	575 V	460 V	575 V
<b>Frequency</b>	60 Hz	60 Hz	60 Hz	60 Hz
<b>Phase</b>	Three	Three	Three	Three
<b>Wattage</b>	6300 W	6300 W	8600 W	8600 W
<b>Power</b>	8.5 HP	8.5 HP	11.5 HP	11.5 HP
<b>Amperage</b>	13.3 A	10.4 A	17.3 A	13.6 A
<b>Air Flow</b>	353 CFM	353 CFM	494 CFM	494 CFM
<b>Vacuum Pressure</b>	108 " H <sub>2</sub> O	108 " H <sub>2</sub> O	108 " H <sub>2</sub> O	108 " H <sub>2</sub> O
<b>VRV Setting</b>	93 " H <sub>2</sub> O	93 " H <sub>2</sub> O	93 " H <sub>2</sub> O	93 " H <sub>2</sub> O
<b>Sound Level</b>	74 dB(A)	74 dB(A)	76 dB(A)	76 dB(A)
<b>Type of Power Outlet</b>	Not Included	Not Included	Not Included	Not Included
<b>Suction Inlet Port</b>	70 mm	70 mm	70 mm	70 mm
<b>Cart Type</b>	Detachable Tank (DT)	Detachable Tank (DT)	Detachable Tank (DT)	Detachable Tank (DT)
<b>Filter Cleaning</b>	Manual Filter Shaker (MFS)	Manual Filter Shaker (MFS)	Manual Filter Shaker (MFS)	Manual Filter Shaker (MFS)
<b>Dust Recovery Tank</b>	26 Gal	26 Gal	26 Gal	26 Gal
<b>Length</b>	55 "	55 "	55 "	55 "
<b>Width</b>	26.5 "	26.5 "	26.5 "	26.5 "
<b>Height</b>	58 "	58 "	58 "	58 "
<b>Weight (Vacuum Only)</b>	550 lb.	550 lb.	550 lb.	550 lb.
<b>Cord Length</b>	30 ft.	30 ft.	30 ft.	30 ft.

Please note that specifications are subject to change without notice

## Use only recommended tools & accessories



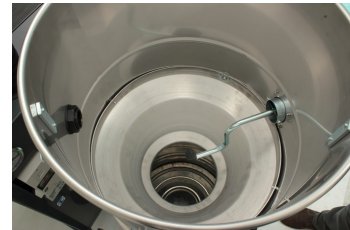
Filter Blockage Indicator Gage. Manual Starter with Overload Protection



Integrated Silencer



Side Mounted Manual Filter Shaker



Side Mounted Manual Filter Shaker (Internal View)



Sight Glass on Recovery Tank



HEPA Filter - Included



Tangential Suction Inlet, 70 mm, Aluminum



Conductive Star Shaped Filter with Cage for ORDLOC 652 - Included



70 mm static conductive tool kit - Included