

CLEANING MACHINES FOR UNCLASSIFIED (GENERAL PURPOSE) AREAS

All the electrical components are certified by an NRTL such as UL, CSA or ETL



Complies with NFPA 77 "Recommended Practice on Static Electricity"



### Characteristics



Continuous Duty



HEPA - Included



High Filtration Efficiency Unit



Dry Recovery



Detachable Tank



SS 304



SD Accessories - Included

- Complies with NFPA 652 paragraph 8.4.2.2.1.7 and NFPA 654 paragraph 8.4.3.7 (1) to (7)
- Industrial continuous duty vacuum system
- Very powerful machine capable of working with large diameter suction hoses up to 70 mm. Perfect for Food industry, machine shops, Plastics industry, Ceramics industry, printing, textiles, heavy clean-up, etc.
- Regenerative blower with TEFC induction motor rated for continuous duty
- Includes a star shaped main filter
- Manual Filter Shaker (MFS) system
- Upstream filter cartridge for fine dust
- HEPA filter with an efficiency of 99.995% at 0.3 micron. Tested IEST-RP-CC001. H14 by MPPS method as per EN 1822 and OSHA compliant. All of our HEPA vacuum systems are aerosol leak tested before leaving our facility - included
- Detachable recovery tank (DT) for easy disposal of recovered materials
- Filter chamber and recovery tank made of stainless steel Type 304
- Sight glass installed on recovery tank
- Includes a complete static dissipative tool kit

## Specifications

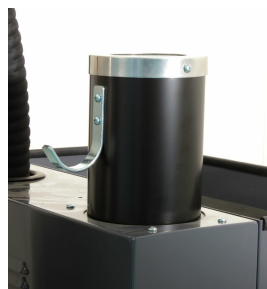
TV-730 (DT) MFS HEPA ORDLOC-652	111214A1-652	111214A5-652
<b>Model Name</b>	TV-730 (DT) MFS HEPA ORDLOC-652	TV-730 (DT) MFS HEPA ORDLOC-652
<b>Type (Powerhead)</b>	Electric	Electric
<b>TEFC Motor</b>	Yes	Yes
<b>Tension</b>	460 V	575 V
<b>Frequency</b>	60 Hz	60 Hz
<b>Phase</b>	Three	Three
<b>Wattage</b>	3450 W	3450 W
<b>Power</b>	4.6 HP	4.6 HP
<b>Amperage</b>	7.3 A	5.8 A
<b>Air Flow</b>	185 CFM	185 CFM
<b>Vacuum Pressure</b>	104 " H <sub>2</sub> O	104 " H <sub>2</sub> O
<b>Type of Power Outlet</b>	Not Included	Not Included
<b>Suction Inlet Port</b>	70 mm	70 mm
<b>Cart Type</b>	Detachable Tank (DT)	Detachable Tank (DT)
<b>Filter Cleaning</b>	Manual Filter Shaker (MFS)	Manual Filter Shaker (MFS)
<b>Filter Type</b>	Star Shaped + Cartridge	Star Shaped + Cartridge
<b>Filter Surface Area</b>	21 ft <sup>2</sup> + 10.8 ft <sup>2</sup>	21 ft <sup>2</sup> + 10.8 ft <sup>2</sup>
<b>Dust Recovery Tank</b>	15.6 Gal	15.6 Gal
<b>Length</b>	43 "	43 "
<b>Width</b>	24.5 "	24.5 "
<b>Height</b>	50 "	50 "
<b>Weight (Vacuum Only)</b>	303 lb.	303 lb.
<b>Cord Length</b>	30 ft.	30 ft.

Please note that specifications are subject to change without notice

## Use only recommended tools & accessories



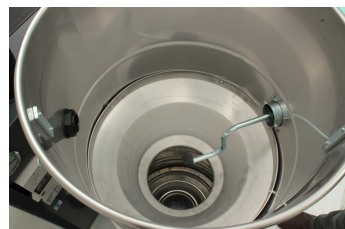
Filter Blockage Indicator Gage. Manual Starter with Overload Protection



Integrated Silencer



Side Mounted Manual Filter Shaker



Side Mounted Manual Filter Shaker (Internal View)



Sight Glass on Recovery Tank



HEPA Filter - Included



Tangential Suction Inlet, 70 mm, Aluminum



Conductive Star Shaped Filter with Cage for ORDLOC 652 - Included



Ø2" (Ø50 mm) Static Conductive Tool Kit - Included