

CLEANING MACHINES FOR UNCLASSIFIED (GENERAL PURPOSE) AREAS

All the electrical components are certified by an NRTL such as UL, CSA or ETL

### Characteristics



- Industrial continuous duty vacuum system
- Very powerful machine capable of working with large diameter suction hoses up to 70 mm. Perfect for Food industry, machine shops, Plastics industry, Ceramics industry, printing, textiles, heavy clean-up, etc.
- Regenerative blower with TEFC induction motor rated for continuous duty
- Includes a star shaped main filter
- Manual Filter Shaker (MFS) system
- Upstream filter cartridge for fine dust
- HEPA Filter with a minimum efficiency of 99.97% at 0.3 micron (installed in the place of the upstream filter cartridge) - optional
- Equipped with the Longopac® Collection System. This is an "endless" collection bag that can be dispensed to your desired length. Once the desired amount has been filled, simply cut and seal for a new use
- The Longopac® bag cassette is hygienic since the bags are replaced and sealed from the outside, which ensure no contact with the waste. Longopac® is manufactured from an extremely thin and strong 3-layer polyethylene material
- This system is very popular in the construction industry, but there are also many applications for it in the food and pharmaceutical industries
- Filter chamber made of stainless steel Type 304
- Exhaust silencer for a quiet operation

## Specifications

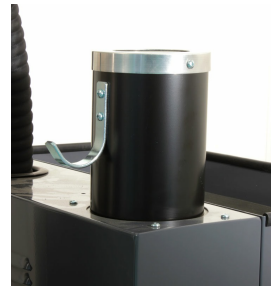
PLANET 740S MB	111222A1	111222A2	111222A5
<b>Model Name</b>	PLANET 740S MB	PLANET 740S MB	PLANET 740S MB
<b>Type (Powerhead)</b>	Electric	Electric	Electric
<b>TEFC Motor</b>	Yes	Yes	Yes
<b>Tension</b>	460 V	208-230 V	575 V
<b>Frequency</b>	60 Hz	60 Hz	60 Hz
<b>Phase</b>	Three	Three	Three
<b>Wattage</b>	4600 W	4600 W	4600 W
<b>Power</b>	6 HP	6 HP	6 HP
<b>Amperage</b>	9 A	15.6 A	7.6 A
<b>Air Flow</b>	294 CFM	294 CFM	294 CFM
<b>Vacuum Pressure</b>	155 " H <sub>2</sub> O	155 " H <sub>2</sub> O	155 " H <sub>2</sub> O
<b>VRV Setting</b>	110 " H <sub>2</sub> O	110 " H <sub>2</sub> O	110 " H <sub>2</sub> O
<b>Sound Level</b>	74 dB(A)	74 dB(A)	74 dB(A)
<b>Type of Power Outlet</b>	Not Included	Not Included	Not Included
<b>Suction Inlet Port</b>	70 mm	70 mm	70 mm
<b>Cart Type</b>	LONGOPAC®	LONGOPAC®	LONGOPAC®
<b>Filter Cleaning</b>	Manual Filter Shaker (MFS)	Manual Filter Shaker (MFS)	Manual Filter Shaker (MFS)
<b>Filter Type</b>	Star Shaped + Cartridge	Star Shaped + Cartridge	Star Shaped + Cartridge
<b>Filter Surface Area</b>	21 ft <sup>2</sup> + 10.8 ft <sup>2</sup>	21 ft <sup>2</sup> + 10.8 ft <sup>2</sup>	21 ft <sup>2</sup> + 10.8 ft <sup>2</sup>
<b>Dust Recovery Tank</b>	LONGOPAC®	LONGOPAC®	LONGOPAC®
<b>Length</b>	43 "	43 "	43 "
<b>Width</b>	24.5 "	24.5 "	24.5 "
<b>Height</b>	58 "	58 "	58 "
<b>Weight (Vacuum Only)</b>	305 lb.	305 lb.	305 lb.
<b>Cord Length</b>	30 ft.	30 ft.	30 ft.

Please note that specifications are subject to change without notice

## Use only recommended tools & accessories



Planet Filter Blockage Indicator Gage. Manual Starter with Overload Protection



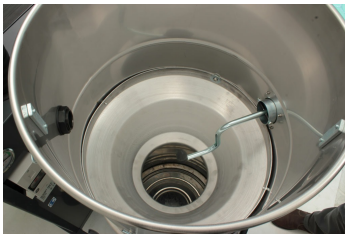
Planet Integrated Silencer



Planet Longopac® "Endless" Collection System



Side Mounted Manual Filter Shaker



Planet Side Mounted Manual Filter Shaker (Internal View)



PLANET 740S & 740S MB Polyester Filter Cartridge - Included



Star Shaped Polyester Main Filter



Tangential Suction Inlet, 70 mm, Aluminum



Planet Vacuum Relief Valve (VRV)