

CLEANING MACHINES FOR UNCLASSIFIED (GENERAL PURPOSE) AREAS

All the electrical components are certified by an NRTL such as UL, CSA or ETL



Complies with NFPA 77 "Recommended Practice on Static Electricity"



Characteristics



Continuous Duty



HEPA - Included



High Filtration Efficiency Unit



Dry Recovery



Detachable Tank



SS 304



SD Accessories - Included

- Complies with NFPA 652 paragraph 8.4.2.2.1.7 and NFPA 654 paragraph 8.4.3.7 (1) to (7)
- Industrial continuous duty vacuum system
- Very powerful machine capable of working with large diameter suction hoses up to 70 mm. Perfect for Food industry, machine shops, Plastics industry, Ceramics industry, printing, textiles, heavy clean-up, etc.
- Regenerative blower with TEFC induction motor rated for continuous duty
- Includes a star shaped main filter
- Manual Filter Shaker (MFS) system
- Upstream filter cartridge for fine dust
- HEPA filter with an efficiency of 99.995% at 0.3 micron. Tested IEST-RP-CC001. H14 by MPPS method as per EN 1822 and OSHA compliant. All of our HEPA vacuum systems are aerosol leak tested before leaving our facility - included
- Detachable recovery tank (DT) for easy disposal of recovered materials
- Filter chamber and recovery tank made of stainless steel Type 304
- Sight glass installed on recovery tank
- Exhaust silencer for a quiet operation
- Includes a complete static dissipative tool kit

Specifications

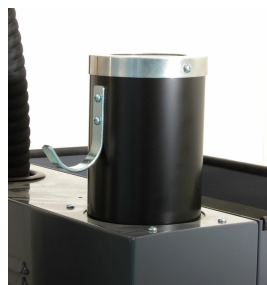
TV-740S (DT) MFS HEPA ORDLOC-652	111218A1-652	111218A2-652	111218A5-652
Model Name	TV-740S (DT) MFS HEPA ORDLOC-652	TV-740S (DT) MFS HEPA ORDLOC-652	TV-740S (DT) MFS HEPA ORDLOC-652
Type (Powerhead)	Electric	Electric	Electric
TEFC Motor	Yes	Yes	Yes
Tension	460 V	208-230 V	575 V
Frequency	60 Hz	60 Hz	60 Hz
Phase	Three	Three	Three
Wattage	4600 W	4600 W	4600 W
Power	6 HP	6 HP	6 HP
Amperage	9 A	15.6 A	7.6 A
Air Flow	294 CFM	294 CFM	294 CFM
Vacuum Pressure	155 " H ₂ O	155 " H ₂ O	155 " H ₂ O
VRV Setting	110 " H ₂ O	110 " H ₂ O	110 " H ₂ O
Sound Level	74 dB(A)	74 dB(A)	74 dB(A)
Type of Power Outlet	Not Included	Not Included	Not Included
Suction Inlet Port	70 mm	70 mm	70 mm
Cart Type	Detachable Tank (DT)	Detachable Tank (DT)	Detachable Tank (DT)
Filter Cleaning	Manual Filter Shaker (MFS)	Manual Filter Shaker (MFS)	Manual Filter Shaker (MFS)
Filter Type	Star Shaped + Cartridge	Star Shaped + Cartridge	Star Shaped + Cartridge
Filter Surface Area	21 ft ² + 10.8 ft ²	21 ft ² + 10.8 ft ²	21 ft ² + 10.8 ft ²
Recovery Capacity (Dry)	26 Gal (100 L)	26 Gal (100 L)	26 Gal (100 L)
Length	43 "	43 "	43 "
Width	24.5 "	24.5 "	24.5 "
Height	58 "	58 "	58 "
Weight (Vacuum Only)	305 lb.	305 lb.	305 lb.
Cord Length	30 ft.	30 ft.	30 ft.

Please note that specifications are subject to change without notice

Use only recommended tools & accessories



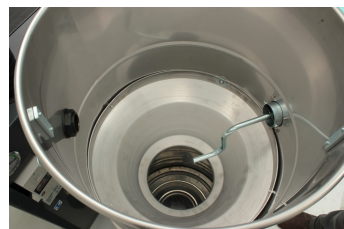
Filter Blockage Indicator Gage. Manual Starter with Overload Protection



Integrated Silencer



Side Mounted Manual Filter Shaker



Side Mounted Manual Filter Shaker (Internal View)



Sight Glass on Recovery Tank



HEPA Filter - Included



Tangential Suction Inlet, 70 mm, Aluminum



Conductive Star Shaped Filter with Cage for ORDLOC 652 - Included



Ø2" (Ø50 mm) Static Conductive Tool Kit - Included