

Designed for use in :  
Division 1, Class I, Groups A, B, C and D  
Division 1, Class II, Groups E, F, G  
Hazardous Locations as defined in the National Electrical Code (NFPA 70)

**ATEX** 3rd Party Certified

CE II 2GD  
Ex h IIC T6 Gb  
Ex h IIIC T85°C Db  
LCIE 03 ATEX 6310 X



Ex h IIC T6 Gb  
Ex h IIIC T85°C Db  
IECEx LCIE 17.0076 X



**GUARANTEED** for the Safe Recovery of Combustible/Conductive Dusts

**ESD Safe** Vacuum Systems for Hazardous Locations are designed to prevent ignition hazards.  
We use metal parts or Static Dissipative Powder Coating to prevent Electrostatic Discharge (ESD)

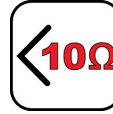


Complies with NFPA 77 "Recommended Practice on Static Electricity"

### Characteristics



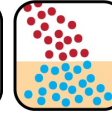
EX Certified



Less than 10 ohms



Dry Recovery



Wet Mix - Oil



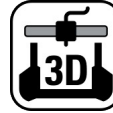
Coalescing Filter Element



SD Accessories - Included



SS 304



3D Printing



- Hydrogen safe
- Immersion separator "Wet Oil Mix" - Meant to be used with mineral oil or any other neutralizing liquid
- **Designed for the Recovery and INERTIZATION of Conductive and Explosive Dust, such as Aluminum, Magnesium, Zirconium and other commercial alloys, into a Liquid Immersion Bath**
- Legally certified explosion proof/dust ignition proof
- Meets the requirements for a Liquid Precipitation Collector for metal dusts as outlined in NFPA 484
- Less than 10 ohms of resistivity
- Coalescing Filter Element (CFE) for moisture removal. HEPA Grade. 99.97% efficiency at 0.3 micron
- Pneumatic (air-operated)
- Recovery capacity of 22 lb (10 kg) of dust into 7.9 gal. (30L) of oil or any other neutralizing liquid
- Stainless steel Type 304 body and heavy duty powder coated cart
- Equipped with a liquid level indicator
- Tiger-Vac® recommends the use of mineral oil with a viscosity = 10.5 cSt.

## Specifications

SS-IT (85L) EX (CFE) HEPA WET (OIL) MIX	110417-OIL
<b>Model Name</b>	SS-IT (85L) EX (CFE) HEPA WET (OIL) MIX
<b>Type (Powerhead)</b>	Pneumatic
<b>Venturi</b>	Single
<b>Venturi (diam.)</b>	5 mm
<b>Minimum Compressor</b>	15 HP
<b>Air Line Size (Diam.)</b>	1/2 "
<b>Input Air Volume</b>	45 CFM
<b>Input Air Pressure</b>	80 PSI
<b>Air Flow</b>	120 CFM
<b>Vacuum Pressure</b>	120 " H <sub>2</sub> O
<b>Sound Level</b>	70 dB(A)
<b>Suction Inlet Port</b>	2 "
<b>Cart Type</b>	Detachable Tank (DT)
<b>Filter Cleaning</b>	None
<b>Length</b>	40 "
<b>Width</b>	24 "
<b>Height</b>	71 "
<b>Weight (Vacuum Only)</b>	207 lb.

Please note that specifications are subject to change without notice

## Use only recommended tools & accessories



SS-IT (85L) EX (CFE) HEPA with Recovery Tank removed



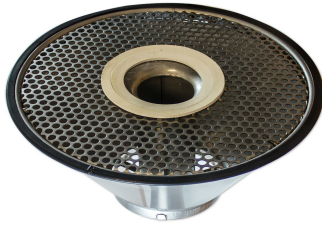
Coalescing Filter Element (CFE) - Included



Liquid Level Indicator Tube - Included



Sieve Basket - Included



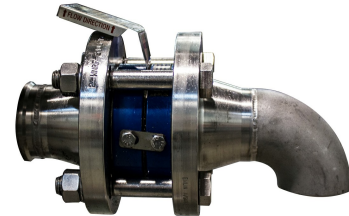
Cone for Interceptors - Included



Air Supply Hose Assembly, Static Dissipative and Conductive - Included



Tool Kit for Interceptors - Included



Rupture Disk - Optional