



Applicable Requirements :
ANSI/UL 1017
CSA C22.2 No.243

Characteristics



HEPA -
Included



High Filtration
Efficiency Unit



Wet and Dry
Recovery



- HEPA filter with an efficiency of 99.995% at 0.3 micron. Tested IEST-RP-CC001. H14 by MPPS method as per EN 1822 and OSHA compliant. All of our HEPA vacuum systems are aerosol leak tested before leaving our facility - included
- For general housekeeping
- Heavy duty 2-stage by-pass motor
- For wet & dry recovery
- Polyethylene recovery tank
- Silent operation
- Mounted on a Tilting Cart (TC) for easy disposal of recovered materials

Specifications

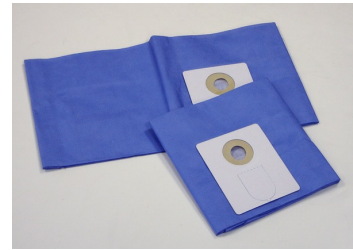
2D-15 (TC) RE HEPA	110566A
Model Name	2D-15 (A) (TC) RE HEPA
Type (Powerhead)	Electric
Tension	120 V
Frequency	60 Hz
Phase	Single
Wattage	1207 W
Power	1.6 HP
Amperage	10.5 A
Air Flow	110 CFM
Vacuum Pressure	107 " H ₂ O
Sound Level	69 dB(A)
Type of Power Outlet	120V
Suction Inlet Port	1.5 "
Cart Type	Tilt Cart (TC)
Filter Cleaning	None
Dust Recovery Tank	12.5 gal.
Dry Recovery - Disposable Filter Bag	5 gal.
Liquid Recovery Capacity	12.5 gal.
Length	30 "
Width	28 "
Height	38 "
Weight (Vacuum Only)	77 lb.
Cord Length	35 ft.

Please note that specifications are subject to change without notice

Use only recommended tools & accessories



HEPA Filter - Included



Disposable Filter Bag - Included



Clear Polyliner Recovery Bags - Included



PVC Crushproof Suction Hose Assembly - Included



Tools and Accessories (Toolkit 4B) - Optional