



Applicable Requirements :
ANSI/UL 1017
CSA C22.2 No.243

Characteristics



HEPA -
Included



High Filtration
Efficiency Unit



Wet and Dry
Recovery



- HEPA filter with an efficiency of 99.995% at 0.3 micron. Tested IEST-RP-CC001. H14 by MPPS method as per EN 1822 and OSHA compliant. All of our HEPA vacuum systems are aerosol leak tested before leaving our facility - included
- For general housekeeping
- Heavy duty 2-stage by-pass motor
- Middle ring for poly liner recovery bag. For the recovery of wet/saturated asbestos
- For wet & dry recovery
- Polyethylene recovery tank
- Silent operation
- Mounted on a Tilting Cart (TC) for easy disposal of recovered materials

Specifications

2D-16 (TC) RE HEPA MR (ASBESTOS)	110571A
Model Name	2D-16 (TC) RE HEPA MR (ASBESTOS)
Type (Powerhead)	Electric
Tension	120 V
Frequency	60 Hz
Phase	Single
Wattage	1207 W
Power	1.6 HP
Amperage	10.5 A
Air Flow	110 CFM
Vacuum Pressure	107 " H ₂ O
Sound Level	69 dB(A)
Type of Power Outlet	120V
Suction Inlet Port	2 "
Cart Type	Tilt Cart (TC)
Filter Cleaning	None
Dust Recovery Tank	15 Gal
Liquid Recovery Capacity	15 gal.
Length	27 "
Width	27 "
Height	45 "
Weight (Vacuum Only)	85 lb.
Cord Length	35 ft.

Please note that specifications are subject to change without notice

Use only recommended tools & accessories



HEPA Filter - Included



Main Cloth Filter - Included



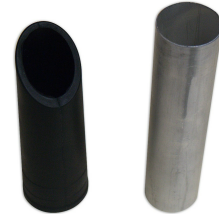
Dralon Pre-Filter & Liquid Filter - Included



Asbestos Polyliner (6) W retaining clip (not shown) - Included



PVC Crushproof Suction Hose Assembly - Included



Conical Nozzle and Adaptor - Included