

Characteristics



- Cleanroom compatible with ISO Class 4 (former Class 10). Can be used in the Pharmaceutical industry
- Designed for the recovery of acids and corrosive liquids
- To be used as a Recovery Unit in conjunction with a vacuum system
- Available with a variety of activated carbon, including KINA 3® activated carbon for the adsorption of chloride and acid vapors (HF, HCL, etc). Other types of activated carbon are available. Carbon cartridges must be ordered separately - not included
- For liquid recovery. Optional dry recovery available
- All electropolished stainless steel construction
- Autoclavable
- Mounted on a 4-wheel dolly for easy maneuverability
- Includes a complete tool kit.

Specifications

| LARU-10 (4W) SERIES | 211800 | 211802 |
|---------------------------------|--------------------|--------------------|
| Model Name | LARU-10 (4W) | LARU-10 (4W) MRAC |
| Suction Inlet Port | 1.5 " | 1.5 " |
| Cart Type | 4 Wheel Dolly (4W) | 4 Wheel Dolly (4W) |
| Filter Cleaning | None | None |
| Liquid Recovery Capacity | 7.5 gal. | 7.5 gal. |

Please note that specifications are subject to change without notice

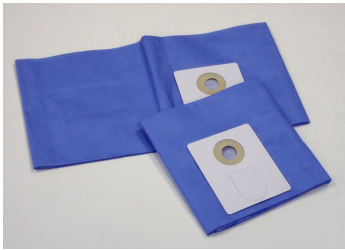
Use only recommended tools & accessories



LARU Tools and Accessories - Included



Activated Carbon Cartridge - Optional



Disposable Filter Bag - Optional