



Applicable Requirements :
ANSI/UL 1017
CSA C22.2 No.243



Forklift
Ready



Wet and Dry
Recovery

Characteristics



- Electric industrial vacuum system for the recovery of large quantities of coolant/oil mixed with some metal chips
- The powerhead with dual bypass/dual speed long life motors is mounted directly on the recovery tank
- The internal volume of the recovery tank is 55 gal. (200L). There is a basket in the upper part of the recovery tank which collects the metal chips
- The basket can hold 10 gal. (30L) of metal chips, which allows 45 gal. (170L) of coolant/oil to be recovered in the lower part of the recovery tank
- Coolant/oil is emptied using the manual drain valve
- An electric discharge pump is available for emptying the recovered coolant/oil. The flow rate of the optional pump is 80 gallons per minute (300L/min)
- Four 5" (125 mm) wheels, allow for maximum maneuverability
- A floater (liquid cut-off) is installed under the powerhead to prevent overfilling
- a 100 PPL Protection Filter is also included. The protection filter prevents smaller particles from getting into the pump

Specifications

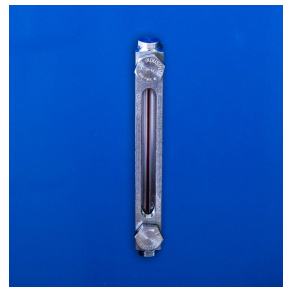
4D-300 (COOLANT/OIL) SERIES	112636A	112638A
Model Name	4D-300 (COOLANT/OIL)	4D-300 (COOLANT/OIL)
Type (Powerhead)	Electric	Electric
Tension	120 V	120 V
Frequency	60 Hz	60 Hz
Phase	Single	Single
Wattage	2040 W	2400 W
Power	2.7 HP	3.2 HP
Amperage	15.2 A	21 A
Air Flow	200 CFM	220 CFM
Vacuum Pressure	90 " H ₂ O	107 " H ₂ O
Type of Power Outlet	Not Included	Not Included
Suction Inlet Port	80 mm	80 mm
Cart Type	Carriage Base (CB)	Carriage Base (CB)
Liquid Recovery Capacity	45 gal.	45 gal.
Solid Recovery Capacity	10 gal.	10 gal.
Length	47 "	47 "
Width	24 "	24 "
Height	51 "	51 "
Weight (Vacuum Only)	415 lb.	415 lb.
Cord Length	33 ft.	33 ft.

Please note that specifications are subject to change without notice

Use only recommended tools & accessories



Sieve Basket and 100 PPL Protection Filter - Included



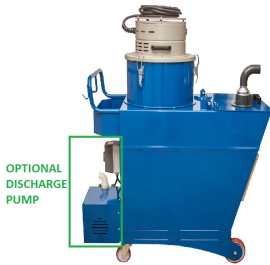
Liquid Level Indicator - Included



Ø2.5" (Ø64 mm) Manual Drain Valve - Included



Discharge Pump - Electrically Operated - Optional



4D-300L (COOLANT/OIL) Side View