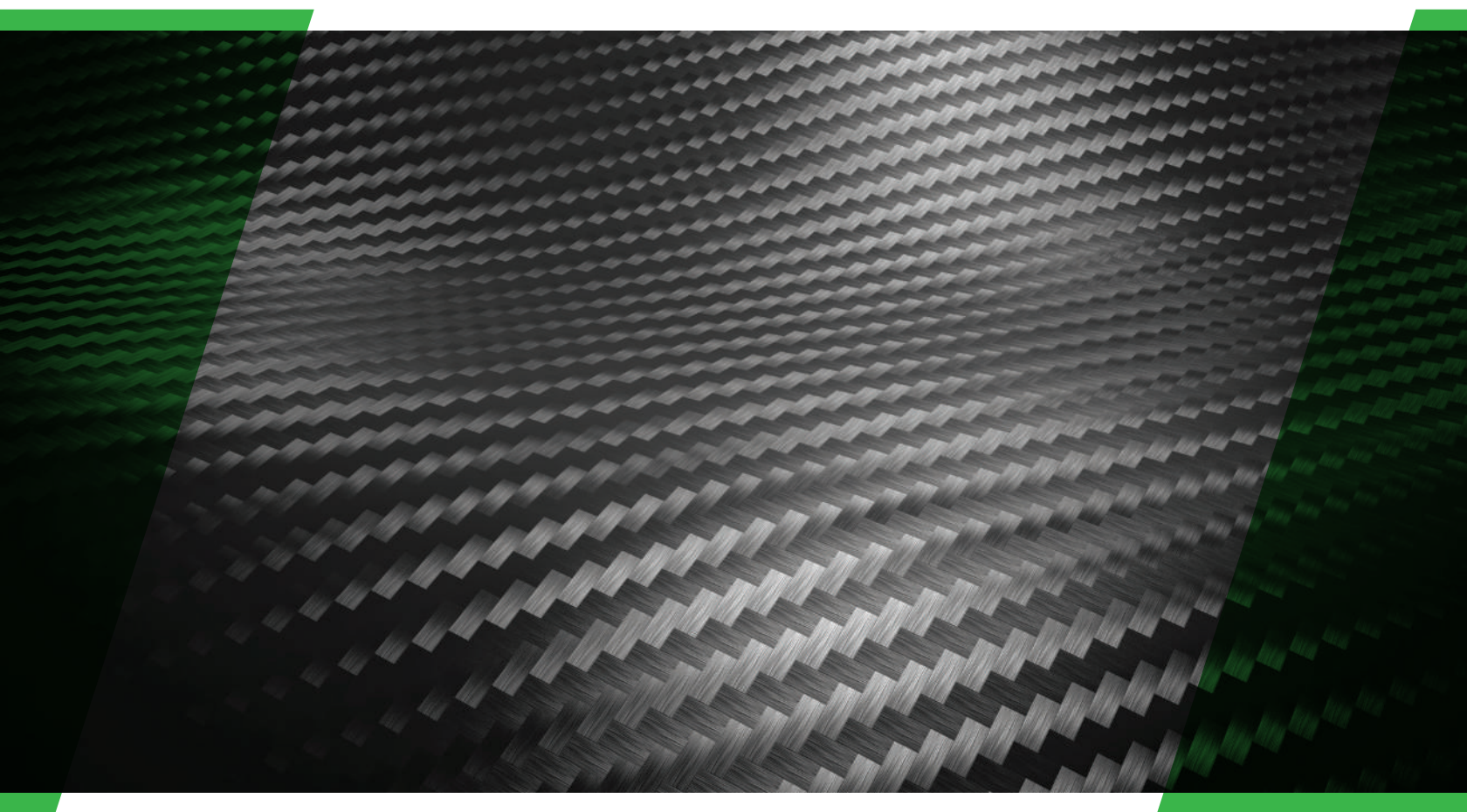
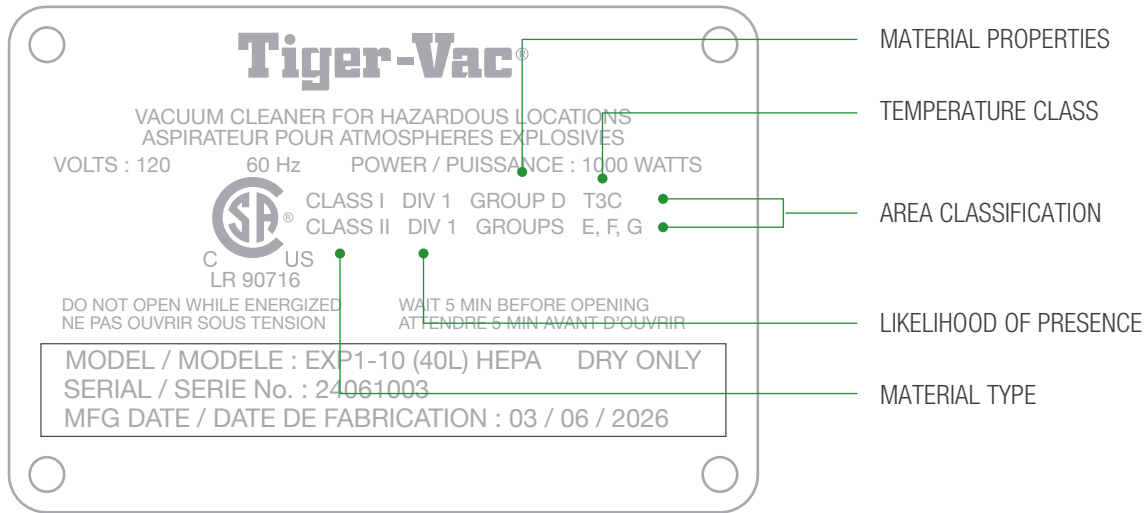


**Tiger-Vac**<sup>®</sup>  
...THE NAME TO VACUUM WITH  
SINCE 1983

**COMPOSITES MANUFACTURING**  
CARBON FIBER · CERAMIC · FIBERGLASS · METAL · POLYMER



[TIGER-VAC.COM](http://TIGER-VAC.COM)



## HAZARDOUS LOCATIONS SAFE RECOVERY OF COMBUSTIBLE SUBSTANCES



	SUBSTANCE	SETTING	CLASSIFICATION	VOLATILITY
<b>CLASS I</b>	<ul style="list-style-type: none"> <li>FLAMMABLE GASES</li> <li>VAPORS</li> <li>LIQUIDS</li> </ul>	<ul style="list-style-type: none"> <li>OIL REFINERY</li> <li>PAINT WAREHOUSE</li> <li>SPRAY BOOTH</li> <li>OIL RIG</li> </ul>	<b>Div.1</b> HAZARD LIKELY	MOST ↑ ↓ LEAST
			<b>Div.2</b> HAZARD NOT LIKELY	
<b>CLASS II</b>	<ul style="list-style-type: none"> <li>COMBUSTIBLE DUSTS</li> </ul>	<ul style="list-style-type: none"> <li>COAL MINE</li> <li>GRAIN SILO</li> <li>MUNITIONS FACTORY</li> <li>HAY STORAGE</li> </ul>	<b>Div.1</b> HAZARD LIKELY	
			<b>Div.2</b> HAZARD NOT LIKELY	
<b>CLASS III</b>	<ul style="list-style-type: none"> <li>IGNITABLE FIBERS</li> <li>FLYINGS</li> </ul>	<ul style="list-style-type: none"> <li>PAPER MILL</li> <li>WOODWORKING</li> <li>TEXTILE MILL</li> <li>COTTON GIN</li> </ul>	<b>Div.1</b> HAZARD LIKELY	
			<b>Div.2</b> HAZARD NOT LIKELY	

## ORDINARY LOCATION SAFE RECOVERY OF COMBUSTIBLE DUSTS AND FIBERS



	SUBSTANCE	SETTING	CLASSIFICATION	VOLATILITY
<b>ORDLOC NFPA 660</b>	<ul style="list-style-type: none"> <li>COMBUSTIBLE DUSTS</li> <li>FIBERS</li> </ul>	<ul style="list-style-type: none"> <li>INDUSTRIAL</li> </ul>	NO HAZARD	<b>NONE</b>

## ORDINARY LOCATIONS SAFE RECOVERY OF NON-COMBUSTIBLE SUBSTANCES



	SUBSTANCE	SETTING	CLASSIFICATION	VOLATILITY
<b>ORDINARY LOCATIONS</b>	<ul style="list-style-type: none"> <li>NON-COMBUSTIBLE</li> </ul>	<ul style="list-style-type: none"> <li>INDUSTRIAL</li> </ul>	NO HAZARD	<b>NONE</b>



# DESIGNED TO SAFELY RECOVER DUST, DEBRIS, AND FIBERS

**16 Gal.**  
**60 L**  
RECOVERY CAPACITY

**26 Gal.**  
**100 L**  
AVAILABLE



### SINGLE PHASE

#### 3 MOTORS (INDIVIDUAL)

Can be used individually or simultaneously

#### HEPA FILTER

- Filtration efficiency of 99.97% at 0.3 micron
- 10.8 ft<sup>2</sup> filter surface area

#### CONDUCTIVE FILTER ASSEMBLY

- Washable star-shaped polyester main filter
- 21 ft<sup>2</sup> filter surface area

#### MANUAL FILTER SHAKER

Dislodges caked-on powders

#### STAINLESS STEEL 304

Corrosion resistant and easy to decontaminate

#### 70 mm TANGENTIAL INLET AND CYCLONE

Separates fine particles from large particles

#### DETACHABLE TANK WITH SIGHT GLASS

Easy access to recovered powders

#### TOOL BASKET

Tool storage allows for efficient organization and easy access to tools on the go

#### CONDUCTIVE WHEELS

Prevents static buildup



#### 3-MOTOR POWERHEAD

- Independently activate each motor
- Pressure gauge
- Filter blockage indicator

DRY RECOVERY

## TV-200 MFS HEPA ORDLOC

PART # 112060A-652

<b>VOLTAGE</b>	120 V	<b>SOUND LEVEL</b>	70 dB(A)
<b>POWER</b>	3.2 HP	<b>VAC. PRESSURE</b>	71.5 in. H <sub>2</sub> O
<b>AMPERAGE</b>	15.8 A	<b>WEIGHT</b>	143 lb.
<b>AIR FLOW</b>	270 CFM	<b>CORD LENGTH</b>	30 ft.

FOR COMPLETE SPECIFICATIONS, VISIT THE PRODUCT PAGE | [TIGER-VAC.COM](http://TIGER-VAC.COM)



# DESIGNED TO SAFELY RECOVER DUST, DEBRIS, AND FIBERS

**THREE  
PHASE**

*Continuous  
Duty* **24-7**



## TEFC THREE-PHASE MOTOR

Greater power, efficiency, and reliability

## HEPA FILTER

- Filtration efficiency of 99.995% at 0.3 micron
- 10.8 ft<sup>2</sup> filter surface area

## CONDUCTIVE FILTER ASSEMBLY

- Washable star-shaped polyester main filter
- 21 ft<sup>2</sup> filter surface area

## MANUAL FILTER SHAKER

Dislodges caked-on powders

## 70 mm TANGENTIAL INLET AND CYCLONE

Separates fine particles from large particles

## DETACHABLE TANK WITH SIGHT GLASS

Easy access to recovered powders

## STAINLESS STEEL 304

Corrosion resistant and easy to decontaminate

## CONDUCTIVE WHEELS

Prevents static buildup

## 4.6 HP

DRY RECOVERY

### TV-730 MFS HEPA ORDLOC

**16 Gal. 60 L**  
RECOVERY CAPACITY  
PART # 111214A1-652

<b>VOLTAGE</b>	460 or 575 V	<b>VAC. PRESSURE</b>	104 in. H <sub>2</sub> O
<b>POWER</b>	4.6 HP	<b>SOUND LEVEL</b>	72 dB(A)
<b>AMPERAGE</b>	5.8 to 7.3 A	<b>WEIGHT</b>	303 lb.
<b>AIR FLOW</b>	185 CFM	<b>CORD LENGTH</b>	30 ft.

## 6 HP

DRY RECOVERY

### TV-740S MFS HEPA ORDLOC

**26 Gal. 100 L**  
RECOVERY CAPACITY  
PART # 111218A1-652

<b>VOLTAGE</b>	208-230 to 575 V	<b>VAC. PRESSURE</b>	110 in. H <sub>2</sub> O
<b>POWER</b>	6 HP	<b>SOUND LEVEL</b>	74 dB(A)
<b>AMPERAGE</b>	7.6 to 15.6 A	<b>WEIGHT</b>	305 lb.
<b>AIR FLOW</b>	294 CFM	<b>CORD LENGTH</b>	30 ft.

FOR COMPLETE SPECIFICATIONS, VISIT THE PRODUCT PAGE | [TIGER-VAC.COM](http://TIGER-VAC.COM)



# DESIGNED FOR PROCESSING AREA, HEAVY CLEANUP, ETC.

**THREE  
PHASE**

*Continuous  
Duty* **24-7**

## TEFC THREE-PHASE MOTOR

Greater power, efficiency, and reliability

## HEPA FILTER

- Filtration efficiency of 99.995% at 0.3 micron
- 10.8 ft<sup>2</sup> filter surface area

## CONDUCTIVE FILTER ASSEMBLY

- Washable star-shaped polyester main filter
- 38 ft<sup>2</sup> filter surface area

## MANUAL FILTER SHAKER

Dislodges caked-on powders

## 70 mm TANGENTIAL INLET AND CYCLONE

Separates fine particles from large particles

## DETACHABLE TANK WITH SIGHT GLASS

Easy access to recovered powders

## STAINLESS STEEL 304

Corrosion resistant and easy to decontaminate



# 8.5 HP

DRY RECOVERY

# TV-775

**DT MFS HEPA ORDLOC**

**26 Gal. 100 L**

RECOVERY CAPACITY

PART # 112080A1-652

<b>VOLTAGE</b>	460 or 575 V	<b>VAC. PRESSURE</b>	93 in. H <sub>2</sub> O
<b>POWER</b>	8.5 HP	<b>SOUND LEVEL</b>	74 dB(A)
<b>AMPERAGE</b>	10.4 or 13.3 A	<b>WEIGHT</b>	550 lb.
<b>AIR FLOW</b>	353 CFM	<b>CORD LENGTH</b>	30 ft.

# 11.5 HP

DRY RECOVERY

# TV-775

**DT MFS HEPA ORDLOC**

**26 Gal. 100 L**

RECOVERY CAPACITY

PART # 112082A1-652

<b>VOLTAGE</b>	460 or 575 V	<b>VAC. PRESSURE</b>	93 in. H <sub>2</sub> O
<b>POWER</b>	11.5 HP	<b>SOUND LEVEL</b>	76 dB(A)
<b>AMPERAGE</b>	13.6 or 17.3 A	<b>WEIGHT</b>	550 lb.
<b>AIR FLOW</b>	494 CFM	<b>CORD LENGTH</b>	30 ft.

FOR COMPLETE SPECIFICATIONS, VISIT THE PRODUCT PAGE | [TIGER-VAC.COM](http://TIGER-VAC.COM)



**IP6X**  
PROTECTED AGAINST  
INGRESS OF DUST

DESIGNED FOR REMOVING  
**FINE PARTICLES ON CLOTHING**

**WM** | WALL MOUNTED

**HH** | HAND HELD

**PCS**  
PERSONAL  
CLEANING STATION

**2 CLASS H14 HEPA FILTERS**

Filtration efficiency of 99.995% at 0.3 micron

**2 Gal.  
7.5 L**  
RECOVERY  
CAPACITY

**SINGLE  
PHASE**

**HD** | HEAVY  
DUTY

**2-STAGE BYPASS MOTOR**

Greater power, efficiency, and usable life

**FILTER BLOCKAGE INDICATOR**

Indicates loss of suction

**STAINLESS STEEL 430**

Corrosion resistant and easy to decontaminate

**STATIC DISSIPATIVE TOOLS**

Prevents static buildup

DRY RECOVERY

**2D-1**  
**(PCS-WM) HEPA ORDLOC**

PART # 113386A

<b>VOLTAGE</b>	120 V	<b>SOUND LEVEL</b>	75 dB(A)
<b>POWER</b>	1.6 HP	<b>VAC. PRESSURE</b>	107 in. H <sub>2</sub> O
<b>AMPERAGE</b>	10.5 A	<b>WEIGHT</b>	25 lb.
<b>AIR FLOW</b>	110 CFM	<b>CORD LENGTH</b>	20 ft.



**WALL MOUNTING BRACKETS**

Stainless steel heavy duty brackets serving as a dedicated, secure docking station



# DESIGNED FOR CONTINUOUS REMOVAL OF AIRBORNE DUST PARTICLES OR BULKY DEBRIS



## HEPA EXHAUST

- Filtration efficiency of 99.995% at 0.3 micron
- Acts as a silencer for a quiet operation

**16 Gal.**  
**60 L**  
RECOVERY  
CAPACITY

**26 Gal.**  
**100 L**  
AVAILABLE

**SINGLE  
PHASE**

**THREE  
PHASE**

**600-700 CFM**

*Continuous  
Duty* **24-7**

**TEFC MOTOR**

CENTRIFUGAL BLOWER

## CONDUCTIVE HEPA MAIN FILTER

Washable star-shaped polyester filter

## STAINLESS STEEL 304

Corrosion resistant and easy to decontaminate

## MANUAL FILTER SHAKER

Dislodges caked-on powders

### OPTION 1

## STATIC CONDUCTIVE HOSE AND BULK WAND

Moisture and UV resistant hose, and 4 in. wand for the recovery of bulky debris



### OPTION 2

## EXTRACTION ARM

For the recovery of airborne dust (includes support elbow and flange)

DRY RECOVERY

# PDC-200 DT MFS HEPA ORDLOC

PART # 111190A1-4A

<b>VOLTAGE</b>	120 to 575 V	<b>SOUND LEVEL</b>	72 dB(A)
<b>POWER</b>	1.5 or 2 HP	<b>WEIGHT</b>	147 lb.
<b>AMPERAGE</b>	1.5 to 13.2 A	<b>CORD LENGTH</b>	30 ft.
<b>AIR FLOW</b>	600-700 CFM		

FOR COMPLETE SPECIFICATIONS, VISIT THE PRODUCT PAGE | [TIGER-VAC.COM](http://TIGER-VAC.COM)



# DESIGNED FOR POWDER COATING APPLICATIONS CLASS I, GROUP D • CLASS II, GROUPS F, G

**9.2 Gal. 35 L**  
RECOVERY CAPACITY



### TOOL BASKET

Onboard tool storage

### SINGLE VENTURI

- Very low surface temperature
- Consistent performance
- Quiet operation

### UPSTREAM HEPA FILTER

- Filtration efficiency of 99.995% at 0.3 micron
- 5.4 ft<sup>2</sup> filter surface area

### STATIC DISSIPATIVE FILTER

Washable PTFE main filter assembly

### MANUAL FILTER SHAKER

Dislodges caked-on powders

### STAINLESS STEEL 304

Corrosion resistant and easy to decontaminate

### DETACHABLE TANK

Easy disposal of recovered powders



**ESD SAFE**

DRY RECOVERY

## AVSD-35L

### DT MFS HEPA + TOOLKIT

PART # 112048

<b>MIN. COMPRESSOR</b>	15 HP	<b>SOUND LEVEL</b>	73 dB(A)
<b>AIR LINE SIZE (Diam.)</b>	0.5 in.	<b>AIR FLOW</b>	120 CFM
<b>AIR VOLUME</b>	45 CFM	<b>VAC. PRESSURE</b>	180 in. H <sub>2</sub> O
<b>AIR PRESSURE</b>	80 PSI	<b>WEIGHT</b>	38 lb.



### STATIC DISSIPATIVE TOOLKIT

- SD crushproof hose
- SD Air supply hose
- Double bend wands
- SD crevice tool
- Aluminum floortool with conductive bristles

FOR COMPLETE SPECIFICATIONS, VISIT THE PRODUCT PAGE | [TIGER-VAC.COM](http://TIGER-VAC.COM)



# POINT OF GENERATION DUST CONTROL FOR THE RECOVERY OF HAZARDOUS AND COMBUSTIBLE DUST

**DS**  
DUSTLESS SANDING

**5 Gal. 19 L**  
RECOVERY CAPACITY

**20 ft. SUCTION/AIR LINE HOSE**

- Static dissipative and conductive
- Crushproof

**TOOL BASKET**

Onboard tool storage allows for efficient organization and easy access to tools on the go

**2 OUTLETS · 0.25 in.**

Sanding tool connection

**INLET · 0.75 in.**

Air line connection

**HAZARDOUS DUST**

Provides a very high filtration efficiency for the collection of hazardous dust

**HEPA FILTER**

- Filtration efficiency of 99.995% at 0.3 micron
- 5.4 ft<sup>2</sup> filter surface area

**STATIC DISSIPATIVE FILTER**

- Washable PTFE main filter assembly
- 3.75 ft<sup>2</sup> filter surface area

**DUAL PORT**

Allowing two operators to work simultaneously

**STAINLESS STEEL 430**

Corrosion resistant and easy to decontaminate

**METAL DUST**

Provides a very high level of protection inside the recovery tank



**ESD SAFE**  
DRY RECOVERY

**AVSD-40L**  
**(2+2W) HEPA SK**

PART # 111847

<b>MIN. COMPRESSOR</b>	15 HP	<b>CART TYPE</b>	2+2 Wheels
<b>AIR LINE SIZE (Diam.)</b>	0.75 in.	<b>AIR FLOW</b>	120 CFM
<b>AIR VOLUME</b>	45 CFM	<b>VAC. PRESSURE</b>	180 in. H <sub>2</sub> O
<b>AIR PRESSURE</b>	80 PSI	<b>WEIGHT</b>	38 lb.

FOR COMPLETE SPECIFICATIONS, VISIT THE PRODUCT PAGE | [TIGER-VAC.COM](http://TIGER-VAC.COM)



**DUSTLESS HANDTOOLS**

Tiger-Vac® has a large selection of optional dustless hand tools for sanding and corrosion control

# PROVEN SOLUTIONS FOR SAFER WORKPLACES



TIGER-VAC.COM | 1 800 668 4437



DESIGNED TO KEEP YOUR  
**MANUFACTURING FACILITY CLEAN AND SAFE**  
 CLASS II, GROUPS F, G

**SINGLE  
 PHASE**



**DB-DS** | DUAL BYPASS  
 DUAL SPEED    **HD** | HEAVY  
 DUTY

**5 CLASS H14 HEPA FILTERS**

- Filtration efficiency of 99.995% at 0.3 micron
- 21.8 ft<sup>2</sup> filter surface area

**STATIC DISSIPATIVE FILTER**

Washable main cloth filter

**STAINLESS STEEL 304**

Corrosion resistant and easy to decontaminate

**MANUAL FILTER SHAKER**

Dislodges caked-on powders

**DETACHABLE TANK**

Easy access to recovered powders

**CONDUCTIVE WHEELS**

Prevents static buildup



**9.2 Gal. 35 L**  
 RECOVERY CAPACITY

DRY RECOVERY

**4D-35L**  
**EX DT MFS HEPA**

PART # 113300A

<b>VOLTAGE</b>	120 V	<b>POWER OUTLET</b>	20 Amps
<b>POWER</b>	2.7 HP	<b>SOUND LEVEL</b>	74 dB(A)
<b>AMPERAGE</b>	15.2 A	<b>WEIGHT</b>	117 lb.
<b>AIR FLOW</b>	200 CFM	<b>CORD LENGTH</b>	33 ft.
<b>VAC. PRESSURE</b>	90 in. H <sub>2</sub> O		



**14.5 Gal.**  
**55 L**  
 RECOVERY  
 CAPACITY

**4D-55L**

Designed for the recovery  
 of hazardous substances/dusts



# DESIGNED TO SAFELY RECOVER CARBON AND FIBERGLASS DUST

## COMBUSTIBLE / CONDUCTIVE DUSTS

- Group F** Conductive carbonaceous dust (carbon black, coal, coke dust, etc.)
- Group G** All flour dust (grain, flour, starch, sugar, wood, plastic, chemical dust, etc.)
- Group IIC** Conductive dust Zone 22 (as per International Standards)

**9.2 Gal.**  
**35 L**  
RECOVERY CAPACITY

**SINGLE PHASE**

**HD** | HEAVY DUTY

### 2-STAGE BYPASS MOTOR

Great durability, efficiency, and long lifespan

**Brushless Motor** ALSO AVAILABLE

### 4 CLASS H14 HEPA FILTERS

- Filtration efficiency of 99.995% at 0.3 micron
- 21.8 ft<sup>2</sup> filter surface area

### HIGH FILTRATION EFFICIENCY FOR WORKING AIR EXHAUST

### STATIC DISSIPATIVE MAIN FILTER

Washable filter

### MANUAL FILTER SHAKER

Dislodges caked-on powders

### STAINLESS STEEL TYPE 430

Corrosion resistant and easy to decontaminate

ALSO AVAILABLE

### CONDUCTIVE POLYLINER

Recovery bag for easy disposal of recovered powders

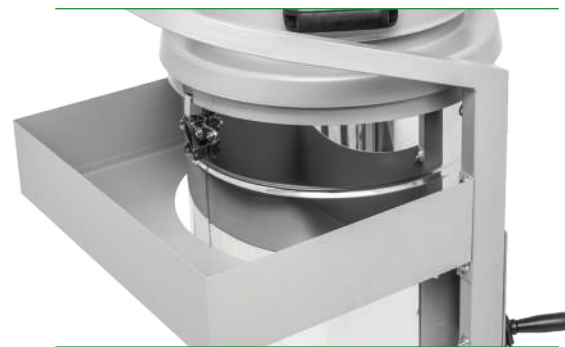
### CONDUCTIVE WHEELS

Prevents static buildup



### DETACHABLE TANK

Easy disposal of recovered powders



### TOOL BASKET

Onboard tool storage for efficient organization and easy access to tools on the go

DRY RECOVERY

## C-35L EX DT MFS + TOOLKIT

PART # 111783A

<b>VOLTAGE</b>	120 V	<b>SOUND LEVEL</b>	72 dB(A)
<b>POWER</b>	1.6 HP	<b>VAC. PRESSURE</b>	107 in. H <sub>2</sub> O
<b>AMPERAGE</b>	10.5 A	<b>WEIGHT</b>	89 lb.
<b>AIR FLOW</b>	110 CFM	<b>CORD LENGTH</b>	35 ft.

FOR COMPLETE SPECIFICATIONS, VISIT THE PRODUCT PAGE | [TIGER-VAC.COM](http://TIGER-VAC.COM)



# EFFECTIVELY RECOVER DUST AND DEBRIS IN HARD TO REACH AREAS QUICKLY, SAFELY, AND EFFICIENTLY

## COMBUSTIBLE/CONDUCTIVE DUSTS

- Group F** Conductive carbonaceous dust (carbon black, coal, coke dust, etc.)
- Group G** All flour dust (grain, flour, starch, sugar, wood, plastic, chemical dust, etc.)
- Group IIC** Conductive dust Zone 22 (as per International Standards)

### FILTER BLOCKAGE INDICATOR

Indicates loss of suction

**5 Gal.  
19 L**

RECOVERY  
CAPACITY

**SINGLE  
PHASE**

**HD | HEAVY  
DUTY**

### 2-STAGE BYPASS MOTOR

Great durability, efficiency, and long lifespan

**Brushless Motor** ALSO AVAILABLE

### 4 CLASS H14 HEPA FILTERS

- Filtration efficiency of 99.995% at 0.3 micron
- 21.8 ft<sup>2</sup> filter surface area

### HIGH FILTRATION EFFICIENCY FOR WORKING AIR EXHAUST

### STATIC DISSIPATIVE MAIN FILTER

Washable filter

### STAINLESS STEEL

Corrosion resistant and easy to decontaminate



### CONDUCTIVE POLYLINER

Containment bag for easy disposal



### CONDUCTIVE BAGS

(Package of 3)

### CONDUCTIVE WHEELS

Prevents static buildup



### STATIC DISSIPATIVE TOOLKIT

- Crushproof hose
- Round brush
- Conical nozzle
- Crevice tool

DRY RECOVERY

## C-10 EX 4W + TOOLKIT

PART # 111805A

<b>VOLTAGE</b>	120 V	<b>SOUND LEVEL</b>	72 dB(A)
<b>POWER</b>	1.6 HP	<b>VAC. PRESSURE</b>	107 in. H <sub>2</sub> O
<b>AMPERAGE</b>	10.5 A	<b>WEIGHT</b>	52 lb.
<b>AIR FLOW</b>	110 CFM	<b>CORD LENGTH</b>	35 ft.

FOR COMPLETE SPECIFICATIONS, VISIT THE PRODUCT PAGE | [TIGER-VAC.COM](http://TIGER-VAC.COM)

**OL**  
ORDINARY  
LOCATIONS

**3rd**  
PARTY  
CERTIFIED

**LIGHTWEIGHT AND ERGONOMIC,  
DESIGNED FOR SAFE RECOVERY IN TIGHT AREAS**

**BP** | BACK  
PACK

**WM** | WALL  
MOUNTED



**WALL-MOUNTED**  
Thru-Flow motor  
**HD** | HEAVY  
DUTY



**0.8 Gal. 3 L**  
RECOVERY CAPACITY

DRY RECOVERY

**T1-3L**  
**BP HEPA + TOOLKIT**

PART # 112210A

<b>VOLTAGE</b>	120 V	<b>VAC. PRESSURE</b>	120 in. H <sub>2</sub> O
<b>POWER</b>	1.7 HP	<b>SOUND LEVEL</b>	60 dB(A)
<b>AMPERAGE</b>	10.5 A	<b>WEIGHT</b>	11 lb.
<b>AIR FLOW</b>	107 CFM	<b>CORD LENGTH</b>	33 ft.

FOR COMPLETE SPECIFICATIONS, VISIT THE PRODUCT PAGE | [TIGER-VAC.COM](http://TIGER-VAC.COM)

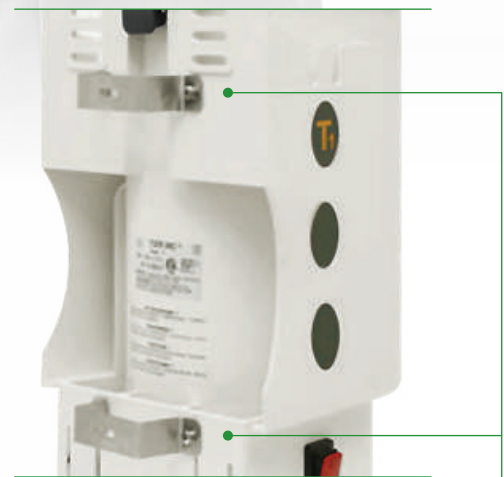


**MAIN FILTER AND FILTER BAG**  
Washable cloth filter

**HEPA FILTER**  
Filtration efficiency of 99.995% at 0.3 micron

**SINGLE PHASE** | **HD** | HEAVY  
DUTY

**THRU-FLOW MOTOR**  
High airflow, efficiency,  
and durability



**WALL MOUNTING BRACKETS**  
Stainless steel heavy duty brackets  
serving as a dedicated, secure docking station

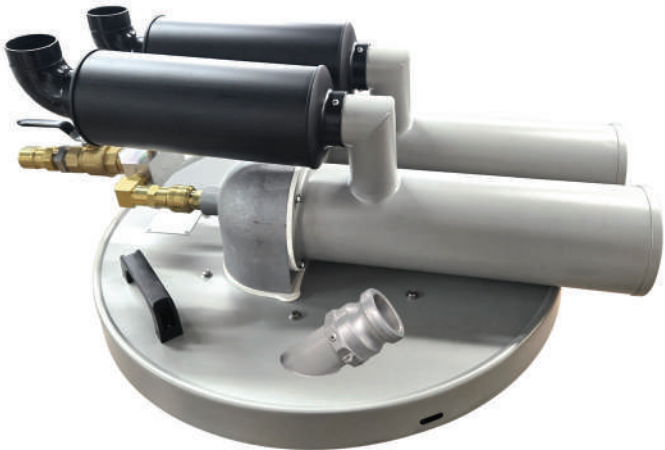


# DRUM-TOP CAPABILITY OPERATOR CAN USE THEIR OWN 55 Gal. DRUM

sales@tiger-vac.com | 1 800 668 4437



**SINGLE VENTURI**  
Compressed air-operated



**TWIN VENTURI**  
Compressed air-operated



**DUAL MOTORS**  
Electric

**1000 lb.  
CAPACITY**

**FORKLIFT DRUM CADDY**  
Pivoting fork pockets  
allow tipping and emptying



**DESIGNED FOR USE IN :**

- DIVISION 1 · CLASS I · GROUPS A, B, C, D
- DIVISION 1 · CLASS II · GROUPS E, F, G
- HAZARDOUS LOCATIONS AS DEFINED IN THE NATIONAL ELECTRICAL CODE (NFPA 70)

# PRE-SEPARATION SYSTEMS FOR FINE DUST AND RECOVERY OF LARGE VOLUME OF POWDERS

CAN BE POWERED BY EITHER A LOW PRESSURE OR HIGH PRESSURE VACUUM SYSTEM, OR A DUST COLLECTOR

**INLET / OUTLET**

- 4 in.
- 6 in.
- 8 in.



**55 Gal.  
208 L**  
RECOVERY CAPACITY

**HEC-100L** PART # 112301  
**(4W) STAINLESS STEEL**



**26 Gal.  
100 L**  
RECOVERY CAPACITY

**HEC-85L** PART # 112303  
**(4W) STAINLESS STEEL**



**22 Gal.  
85 L**  
RECOVERY CAPACITY

HIGH EFFICIENCY CYCLONE

**HEC-200L**  
**(4W) STAINLESS STEEL**

PART # 112304

<b>SUCTION INLET</b>	4 in. CAMLOCK	<b>CART TYPE</b>	4-Wheel
<b>AIR OUTLET</b>	4 in. CAMLOCK	<b>WEIGHT</b>	108 lb.

**HEC-35L**

- Static dissipative and grounded
- Conductive wheels

**HEC-25L**

- Stainless steel 304
- Conductive wheels

FOR COMPLETE SPECIFICATIONS, VISIT THE PRODUCT PAGE | [TIGER-VAC.COM](http://TIGER-VAC.COM)



# DESIGNED FOR WIDE AREA CLEANING WHERE ELECTRICITY IS NOT AVAILABLE

**24V/100Ah**  
FAST CHARGING BATTERY



**3 MOTORS WITH INDEPENDENT SWITCHES**  
Allows operator to adjust the performance and regulate runtime

**MANUAL REVERSE PURGE WITH SLIDE VALVE INLET**  
Allows the operator to clean the filter throughout the day without interruptions

**FILTER CARTRIDGE**

- PTFE-laminated polyester filter
- Minimum filtration efficiency of 99% at 0.3 micron

**DETACHABLE TANK**  
Easy disposal of recovered powders

**1:45 RUNTIME**  
WITH 3 MOTORS

**17 Gal. 65 L**  
RECOVERY CAPACITY

**FRONT MOUNTED FLOOR TOOL**  
Wide area cleaning



**FILTER CARTRIDGE**  
PTFE-laminated polyester filter  
with minimum filtration efficiency of 99% at 0.3 micron

DRY RECOVERY  
**E300Li**  
24V/100Ah PART # 112074A

<b>BATTERY</b>	Lithium-ion	<b>VAC. PRESSURE</b>	64 in. H <sub>2</sub> O
<b>POWER</b>	2 HP	<b>SOUND LEVEL</b>	76 dB(A)
<b>AIR FLOW</b>	247 CFM	<b>WEIGHT</b>	187 lb.

FOR COMPLETE SPECIFICATIONS, VISIT THE PRODUCT PAGE | [TIGER-VAC.COM](http://TIGER-VAC.COM)



EXTEND YOUR REACH

CONDUCTIVE CARBON FIBER EXTENSION POLES



TOTAL HEIGHT  
**18 ft.**  
5.5 M

POSSIBILITY OF ADDING  
**5 ft. WANDS**  
TO INCREASE YOUR REACH





EXTEND YOUR REACH

CONDUCTIVE CARBON FIBER EXTENSION POLES



**POLE**  
Hose Connector



**NECK**  
65° Bend



**NECK**  
155° Bend



**CREVICE TOOL**  
17 in. (43 cm)



**DUSTING BRUSH**  
4 in. (10 cm)



**WALL BRUSH**  
9 in. (23 cm)

3 EXTENSION POLES **5 ft.** (1.5 m) EACH POLE



# Tiger-Vac®

...THE NAME TO VACUUM WITH  
SINCE 1983



Tiger-Vac International Inc.  
2020 Boul. Dagenais Ouest  
Laval, Québec  
Canada H7L 5W2

T. 450-625-0099  
T. 450-622-0100  
F. 450-625-3388  
E. sales@tiger-vac.com  
W. tiger-vac.com

Tiger-Vac Inc.  
11 SW 12th Ave #112  
Dania, FL 33004  
USA

T. 954-925-3625  
F. 954-925-3626  
E. sales@tiger-vac.com  
W. tiger-vac.com

Tiger-Vac Europa S.R.L.  
Via Marie Curie 17  
Zona Industriale Ponte Rizzoli  
Ozzano Emilia, BO 40064

T. (39) 051 79.53.52  
T. (39) 051 4695077  
E. info@tiger-vac.it  
W. tiger-vac.eu